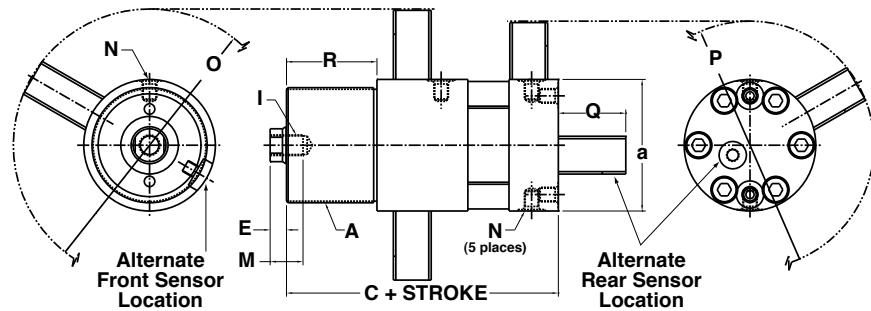


DIMENSIONAL INFORMATION

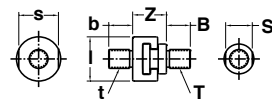
(All Dimensions nominal and in inches)



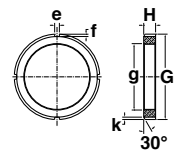
KOR-LOK® SERIES SIZE: 75, 112, 150, 200, 300



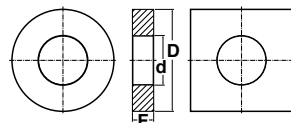
ALIGNMENT COUPLERS (AC)
ALIGNMENT SCREWS (AS)



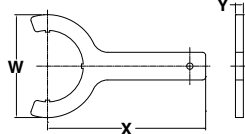
JAM NUT (JN)



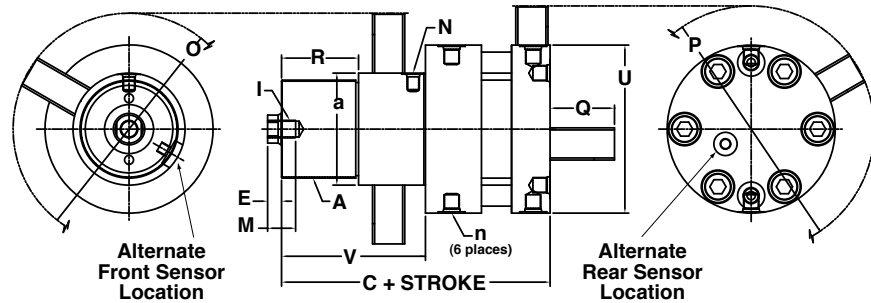
FLANGES
ROUND (RFC) OR SQUARE (SFC)



WRENCH (SWJ)



KOR-LOK® SERIES SIZE: 112-LB, 150-LB, 200-LB



MAIN UNIT [KLH-____-(STROKE) - OPTIONS]

Series Size	Output Intensifier Force****	Bore Dia. Rod Dia.	A	M	E***	R	V	I	C	a	U	N _n (SAE)	O**	P**	Q**
75	12,000 lbs.	1.25"	2 3/4" -16	0.75"	0.50"	2.25"	---	3/8" -24	6.22"	3.00"	---	#4	7.8"	7.1"	2.3"
		0.750"													
112	40,000 lbs.	1.75"	3 1/2" -16	1.00"	0.50"	2.75"	---	5/8" -18	7.26"	4.00"	---	#4	8.4"	7.7"	2.3"
		1.125"													
112-LB*	40,000 lbs.	1.75"	3 1/2" -16	1.00"	0.50"	2.75"	5.14"	5/8" -18	8.59"	4.00"	6.00"	#4	8.4"	8.9"	2.3"
		1.125"													
150	60,000 lbs.	2.00"	4" -16	1.25"	0.75"	3.38"	---	7/8" -16	8.93"	4.50"	---	#6	8.9"	7.9"	2.3"
		1.500"													
150-LB*	60,000 lbs.	2.00"	4" -16	1.25"	0.75"	3.38"	7.04"	7/8" -16	10.75"	4.50"	7.50"	#6	8.9"	10.1"	2.3"
		1.500"													
200	110,000 lbs.	3.00"	5" -12	1.75"	1.00"	3.75"	---	1 1/4" -12	9.98"	6.00"	---	#6	9.9"	8.9"	2.3"
		2.000"													
200-LB*	110,000 lbs.	3.00"	5" -12	1.75"	1.00"	3.75"	8.03"	1 1/4" -12	12.49"	6.00"	9.00"	#6	9.9"	11.5"	2.3"
		2.000"													
300	210,000 lbs.	4.00"	6 3/4" -8	2.00"	1.25"	5.00"	---	1 3/4" -12	12.08"	7.50"	---	#8	11.3"	10.1"	2.3"
		3.000"													

*LB Option - Large Bore units have all the same accessories as standard units. Use -LB in the main unit order code only.

**Sensor Guard dimensions (for 75 series this is actual sensor height - no guards). O and P show swing arc clearance diameter during adjustment. Alternate front location included in the event that interference occurs at final adjustment position. Q is for alternate rear sensor position, if used in place of the rear side location (P).

***KL units use a "Variable E" dimension. Integer stroke lengths (1", 2", 3", 4", 5" standard) are available with E shown in chart. For non-integer fractional strokes, the E will vary from chart - longer by unused fraction of stroke.

****Output Mechanical Intensifier Ratings are for end of stroke (general reference only). Actual performance is dependent upon application geometry, setup and adjustment. Mid stroke and pull forces are less. Minimum operating pressure is 1,500psi. Call for details.

JAM NUTS [KL-____-JN]

ALIGNMENT COUPLERS [KL-____-AC]

ALIGNMENT SCREWS [KL-____-AS]

Series Size	T/t	B/b	S	s	l	Z (set)	Z (pull)	g	G	H	e	f/k
75	3/8" - 24	0.57"	.56"	1.00"	1.13"	0.91"	0.93"	2 3/4" - 16	3.50"	0.50"	0.31"	0.13"
112	5/8" - 18	0.79"	0.88"	1.31"	1.46"	1.12"	1.14"	3 1/2" - 16	4.50"	0.63"	0.31"	0.13"
150	7/8" - 16	1.10"	1.00"	1.70"	1.85"	1.72"	1.74"	4" - 16	5.25"	0.75"	0.38"	0.19"
200	1 1/4" - 12	1.38"	1.50"	2.75"	3.00"	2.90"	2.92"	5" - 12	6.50"	0.88"	0.50"	0.25"
300	1 3/4" - 12	1.58"	2.13"	3.37"	3.63"	4.16"	4.18"	6 3/4" - 8"	8.75"	1.00"	0.63"	0.31"

FLANGES (ROUND OR SQUARE)
[KL-____-RFC OR -SFC]

WRENCH
[KL-____-SWJ]

Series Size	d	D*	F*	Bolt Size/Quantity	Bolt Circle with C'Bore SHCS			Bolt Circle No C'Bore	X	W	Y
					C'Bore Bolt Circle	Depth	Dia.				
75	2 3/4" - 16	6.0"	1.00"	1/2" x 6	3.75" - 5.00"	.56"	.81"	4.5 Ø - 5.25"	9.0	5.0	.5
112	3 1/2" - 16	7.2"	1.50"	5/8" x 6	4.75" - 6.00"	.69"	1.00"	5.75" - 6.25"	10.0	6.5	.5
150	4" - 16	8.0"	1.50"	5/8" x 6	5.25" - 6.75"	.69"	1.00"	6.50" - 7.00"	11.0	7.5	.5
200	5" - 12	10.0"	2.00"	3/4" x 6	6.50" - 8.50"	.81"	1.19"	8.00" - 8.75"	12.0	9.0	.5
300	6 3/4" - 8	14.0"	2.50"	1 x 12	8.75" - 12.25"	1.06"	1.56"	10.50" - 12.50"	15.0	12.0	.5

*Flanges have no pre-drilled bolt holes for maximum design flexibility. Grade 8 bolts required. Since flange edges are flame cut and faces are machined flat, allow +.200/-0.000" for edges and +.000/-0.300" for faces (pilot off center thread only).

Example: KOR-LOK® Main Unit

	Series Size	Stroke (inches)	Options (only if needed)	
	75, 112, 112-LB, 150, 150-LB, 200, 200-LB, 300	Choose stroke to allow for preload adjustment.	Metal Wiper = MW	High Temp Seals = VI
KLH	150-LB	3.00	MW	VI

Main Unit Part No: **KLH-150-LB-3.00-MW-VI**

Example: KOR-LOK® Accessories

	Series Size	Accessories
	75, 112, 150, 200, 300	Round Mounting Flange = RFC Square Mounting Flange = SFC Jam Nut = JN Alignment Screw (Rod Interface) = AS Alignment Coupler (Core Interface) = AC Spanner Wrench for Jam Nut = SWJ
KL	150	JN

KOR-LOK® Accessory Part No: **KL-150-JN**

EXAMPLE:

Main unit and mounting accessory example for a large bore 150 series. Note that LB is only used for the main unit as 150-LB and 150 units have common accessories:

QUANTITY	PART NUMBER	
1	KLH-150-LB-3.00	Main Unit
1	KL-150-SFC	Square Flange
1	KL-150-JN	Jam Nut
1	KL-150-AS	Alignment Screw
1	KL-150-AC	Alignment Coupler
1	KL-150-SWJ	Spanner Wrench

