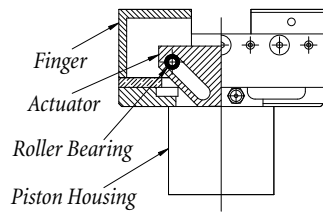


ALL THE FORCE AT A FRACTION OF THE WEIGHT AND MOVEMENT. CLEANROOM, TOO!

APG DOUBLE ACTING PARALLEL JAW GRIPPERS

Light Weight

At less than eight ounces, these featherweight grippers provide an unprecedented grip force to weight ratio.



RCC Mount Version



Multiple Jaw Configurations

6" Gripper available in two or three finger, expanding or contracting styles.
12" Gripper available in two finger contracting style.

Cleanroom - Class 100

Accepted for cleanroom use, the CR100 versions of the APG30 and 45 keep the lines running smoothly - no particle problems here!

Constant Force Application

Grip force is constant at any point along slide, allowing for very large finger travel without sacrificing grip force.

Also Available with Sensors

Hall Effect Sensors can be adjusted to sense the desired open and closed position. The sensors detect part absence and ensure part release.

Sensor Specifications

Supply Voltage Operating:	4.5V - 24VDC
Supply Voltage (max):	24VDC
Current (max):	14mA @ 24VDC
Interconnect Cable:	3 conductor, 24 AWG, with shield. 48 in (122mm) long
Output Configuration:	Open collector, current sinking
Output Voltage (max):	24VDC
Current (max):	25mA
Operating Temperature:	0°C (32°F) -70°C (158°F)
Output Switching Time (max):	.04 microseconds

IDENTIFY YOUR PART NUMBER

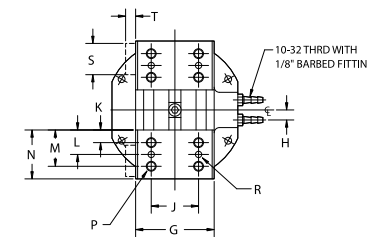
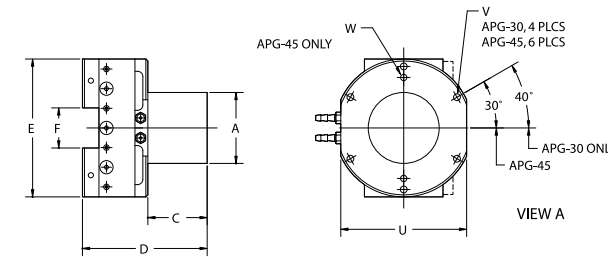
Size	Mounting	Finger Sensor (optional)	Finger Sensor (optional)	Optional Class 100 Cleanroom
APG-30 = 0.5" Stroke APG-45 = 1.0" Stroke APG-80 = 2.0" Stroke	R = Recessed U = Universal	SX = Open	SC = Closed	APG-30 and APG-45 only
APG-80	R	SX	SC	CR100

Example Part No: **APG-80-R-SX-SC-CR100**

RECESSED MOUNT (R)

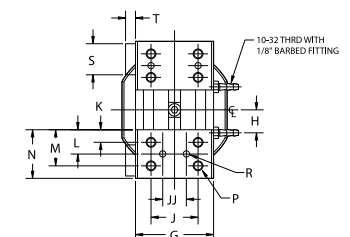
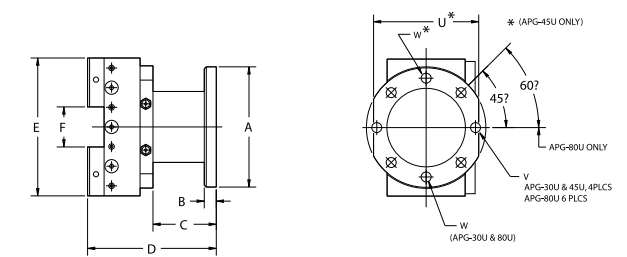
APG-30, APG-45 ONLY

NOTE: DIMENSIONS ARE IN INCHES EXCEPT WHERE NOTED.



UNIVERSAL MOUNT (U)

NOTE: DIMENSIONS ARE IN INCHES EXCEPT WHERE NOTED.



Reference	APG-30R	APG-45R
A	1.80 1.78	1.772 1.770
C	1.25	1.48
D	2.60	3.11
E	2.44	3.44
F	.50	1.00
G	1.25	1.96
H	.25 2 PLCS	.25 2 PLCS
J	.709 Centered	1.181 Centered
K	.197	.315
L	.492	.610
M	.787	.906
N	.97	1.22
P	M4 x 0.7 THD .27DP 4 PLCS Each Finger Block	M5 x 0.8 THD .33 DP 4 PLCS Each Finger Block
R	4.05 4.01 x .27 DP 2 PLCS Each Finger Block	4.05 4.01 x .33 DP 2 PLCS Each Finger Block
S	.78	.78
T	.32	.32
U	2.32	3.15
W	N/A	.159 .158 2 PLCS equally
V	1.70 Thru 4 EQ. SP. 2.4 B.C.	.170 Thru 6 PLS. EQ. SP. 3.07 B.C.

Reference	APG-30U	APG-45U	APG-80U
A	1.97	3.00	4.92
B	.22	.30	0.50
C	1.35	1.58	3.30
D	2.69	3.20	5.57
E	2.44	3.44	6.50
F	.50	1.00	2.0
G	1.25	1.96	3.25
H	.41 2 PLCS	.58 2 PLCS	.75 2 PLCS
J	.709 Centered	1.181 Centered	2.165 Centered
JJ	.709 Centered	1.181 Centered	1.575 Centered
K	.197	.315	.433
KK	---	---	.866
L	.492	.610	1.083
M	.787	.906	1.299
MM	---	---	1.732
N	.97	1.22	2.250
P	M4 x 0.7 THD .27DP 4 PLCS Each Finger Block	M5 x 0.8 THD .33 DP 4 PLCS Each Finger Block	M6 x 1.0 THD .40 DP 8 PLCS Each Finger Block
R	.159 .158 x .27 DP 2 PLCS Each Finger Block	.159 .158 x .33 DP 2 PLCS Each Finger Block	.199 0.197 x 0.40 DP 2 PLCS Each Finger Block
S	.78	.78	1.40
T	.32	.32	.47
U	N/A	2.64	N/A
V	.17 Dia. thru 4 PLCS equally spaced on a 1.575 Dia. B.C.	.25 Dia. thru 4 PLCS equally spaced on a 2.480 Dia. B.C.	0.33 Dia. thru 6 PLCS equally spaced on a 3.937 Dia. B.C.
W	.157 .156 thru on a 1.575 Dia. B.C.	.236 .235 thru on a 2.480 Dia. B.C.	0.315 0.314 thru on a 3.937 Dia. B.C.