

SELECT THE EXACT DOUBLE ACTING GRIP FORCE YOU NEED

DOUBLE ACTING ROBOTIC GRIPPERS

**1000:1
FORCE/WEIGHT
RATIO**



**1,000# of
Grip Force*
DAG-80**

**800# of
Grip Force*
DAG-45**

**250# of
Grip Force*
DAG-30**

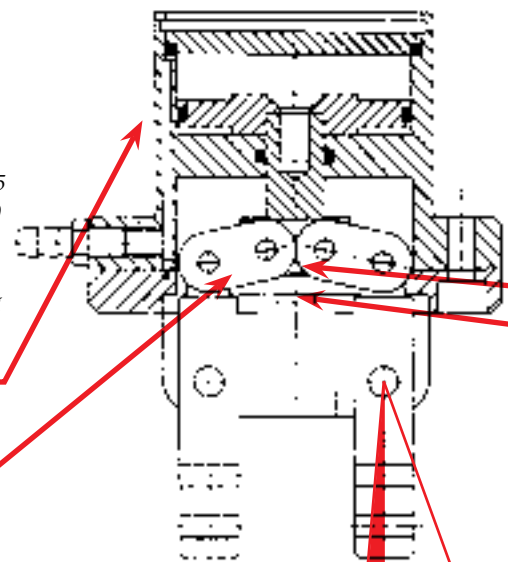
*Based on 100psi air pressure - measured at tip of finger.

Large Grip Force/Low Weight

Large piston area and toggle linkages generate very large forces for such a small gripper. Teflon™ coating and high strength material result in long life/low wear. Weights for the gripper are:
DAG 30 - .50 lbs. (max)
DAG 45 - .80 lbs. (max)
DAG 80 - 2.95 lbs. (max)

Modular Universal

DAG-30 and DAG-45 styles with recessed mounts, mount directly to our AST75 and ASP85/AST100 Accommodators (RCC's) respectively. Universal mounting also available to fit any configuration.

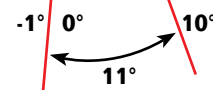


Hall Effect Sensors

Available dual finger position sensing. Current sinking type - 4.5 - 24 VDC (14mA max supply/ 25mA max output) switching time of 0.4 microseconds.

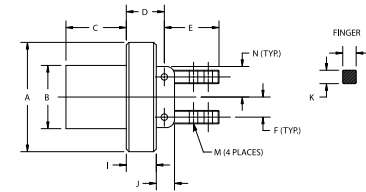
Positive Part Pick-up

Activating magnet trips sensor if part is not present (Finger Travel 1/2° past grip point). Repeatability ±.002".

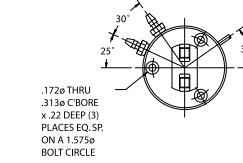


RECESSED MOUNT

NOTE: DIMENSIONS ARE IN INCHES EXCEPT WHERE NOTED.

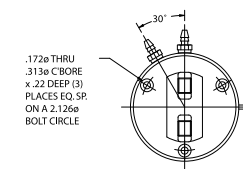


Side View, Recessed Mount

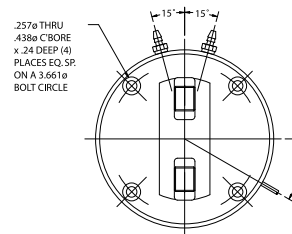


DAG-30

Part Number	DAG-30	DAG-45	DAG-80
A	2.04	2.64	4.35
B	1.180 1.178	1.772 1.770	3.250 3.248
C	1.126	1.277	1.89
D	.71	1.04	1.31
E	1.02	1.10	1.70
F	.375	.550	1.050
G	.275	.315	.511
H	.20	.20	.34
I	.56	.61	.75
J	.34	.65	.90
K	.250	.375	.60
L	.250	.320	.50
M	M4 x .07 thread	M4 x .07 thread	M6 x 1.0 thread
N	.57	.85	1.50



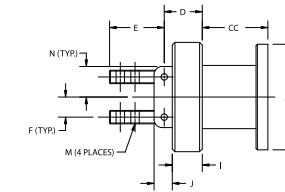
DAG-45



DAG-80

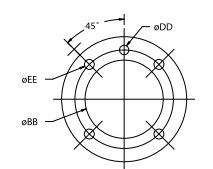
UNIVERSAL FLANGE MOUNT

NOTE: DIMENSIONS ARE IN INCHES EXCEPT WHERE NOTED.

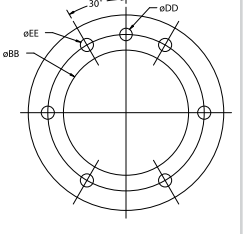


DAG-30

Part Number	DAG-30	DAG-45	DAG-80
AA	1.97	3.15	4.92
BB	1.263/ 1.260 Dia. x .10 DP C'Bore	1.972/ 1.969 Dia. x .10 DP C'Bore	3.153/ 3.150 Dia. x .20 DP C'Bore
CC	1.224	1.375	2.087
DD	.157/ .156 Dia. thru on 1.575 Dia. BC	.236/ .235 Dia. thru on 2.480 Dia. BC	.315/ .314 Dia. thru on 3.937 Dia. BC
EE	.17 Dia. thru, 4 PLS EQ SP on a 1.575 Dia. BC	.25 Dia. thru, 4 PLS EQ SP on a 2.480 Dia. BC	.33 Dia. thru, 6 PLS EQ SP on a 3.937 Dia. BC



DAG-45



DAG-80

IDENTIFY YOUR PART NUMBER

Size	Mounting	Optional Sensor Type
DAG-30 DAG-45 DAG-80	R = Recessed U = Universal	SI = Sinking SO = Sourcing O = None
DAG-80	U	SI

Example Part No: **DAG-80-U-SI**

pfa-inc.com