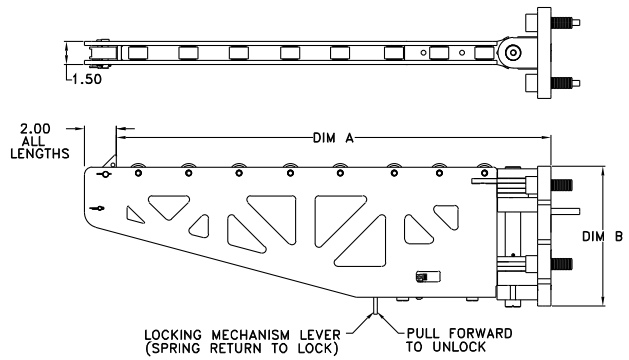




SWING-AWAY BOLSTER EXTENSIONS

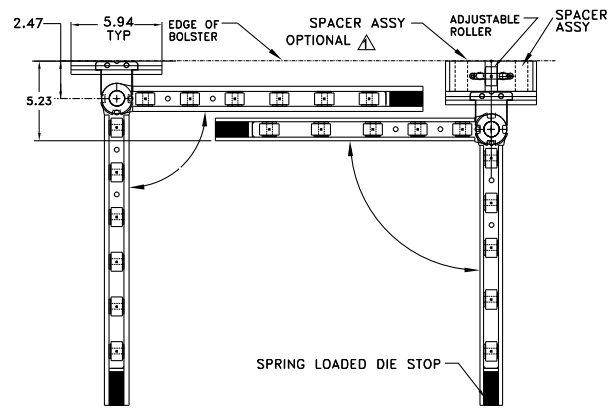
Designed as a permanent solution, Swing-Away Bolster Extensions are always available, yet easily moved out of the way, as needed. Extensions are rated for 6,000 lbs per pair and available up to 40 inches in length, fitting comfortably into most die applications where swing-away extensions are practical.

In applications where extension arms will be stored outward or where the extension separation on the press is greater than 2x the length, arms of the same size work nicely. For inward storage where arms need to overlap, ordering the next smaller size extension for one side along with a nesting spacer is recommended*. This makes the hinge location different between the two arms and allows one extension to store closer to the bolster than the other arm (See illustration).



Model No.	Recommended Spacer Assembly*	A	B
527-16	2" Thick P/N: 6580	16.41"	7.20"
527-18		18.41"	
527-20		20.41"	
527-24	4" Thick P/N: 14688	24.41"	9.15"
527-28		28.41"	
527-32		32.41"	
527-36	4" Thick P/N: 14689	36.05"	11.90"
527-40		40.21"	

*When using different model (length) arms in a nesting application, use only arms with matching "B" dimensions.



Example:

Style	Model Number	Length from Model No.
BE	527	24

Part No: **BE-527-24**

For spacer assemblies use style and model number only.
Example: BE-14688

For non-nesting application, order same size extensions.

Example - for 28" application:

Qty. 2 BE-527-28

For nesting application, order one extension shorter with a spacer assembly. Example - for a 28" application:

Qty. 1 BE-527-28 extension

Qty. 1 BE-527-24 extension

Qty. 1 BE-14688 spacer assembly