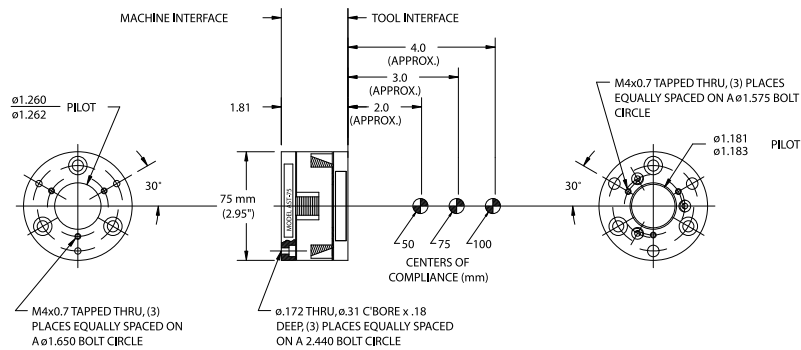


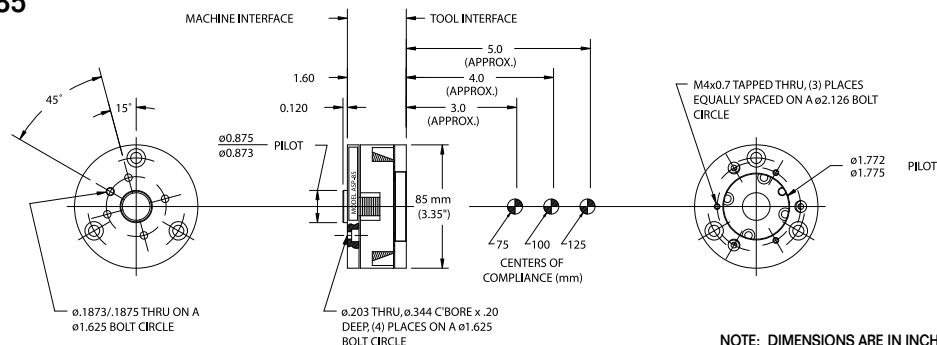
MODEL AST-75



MODEL AST-75	Center-of-Compliance Projection mm (in)	SHEAR PAD TYPE			
		MO-30	CR-35	CR-45	CR-55
Lateral stiffness N/mm (lb/in)	50 (2.0)	12.3 (70)	21.1 (120)	34.7 (197)	49.2 (280)
	75 (3.0)	12.3 (70)	21.1 (120)	34.7 (197)	49.2 (280)
	100 (3.9)	10.5 (60)	18.0 (103)	29.6 (169)	42.0 (240)
Rotational stiffness N-mm/mrad	50 (2.0)	49 (436)	84 (749)	139 (1230)	197 (1740)
	75 (3.0)	90 (797)	155 (1370)	254 (2250)	360 (3190)
	100 (3.9)	169 (1500)	290 (2580)	477 (4230)	676 (6000)
Axial stiffness N/mm (lb/in)		705 (4020)	1210 (6910)	1990 (11340)	2820 (16080)
Torsional stiffness N-mm/mrac in-lb/rad		4.5 (40)	7.7 (68)	12.7 (112)	18.0 (159)
Axial load (max usable) N (lb)		1200 (275)	2000 (450)	3400 (775)	4900 (1100)
Weight 0.40 kg (0.87 lb) Lateral travel ±2.5 mm (0.100 in) Rotational travel ±17 mrad (1.0 deg) Self-centering repeatability ±0.05 (0.002) Structure material is anodized aluminum					

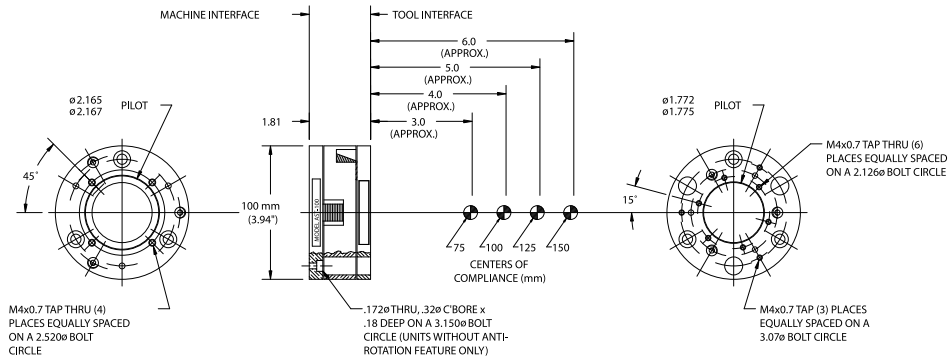
MODEL ASP-85	Center-of-Compliance Projection mm (in)	SHEAR PAD TYPE			
		MO-30	CR-35	CR-45	CR-55
Lateral stiffness N/mm (lb/in)	75 (3.0)	12.2 (70)	21.1 (120)	34.4 (197)	48.8 (280)
	100 (3.9)	13.6 (78)	23.4 (134)	38.4 (220)	54.4 (312)
	125 (4.9)	10.5 (60)	18.0 (103)	29.6 (169)	42.0 (240)
Rotational stiffness N-mm/mrad	75 (3.0)	86 (766)	148 (1320)	243 (2160)	344 (3060)
	100 (3.9)	130 (1140)	223 (1960)	367 (3220)	520 (4560)
	125 (4.9)	233 (2060)	400 (3540)	657 (5810)	932 (8240)
Axial stiffness N/mm (lb/in)		720 (4080)	1240 (7020)	2030 (11500)	2880 (16300)
Torsional stiffness N-mm/mrac in-lb/rad		5.8 (55)	9.9 (94)	16.3 (154)	23.1 (218)
Axial load (max usable) N (lb)		1600 (350)	2700 (600)	4400 (1000)	6400 (1400)
Weight 0.40 kg (0.81 lb) Lateral travel ±2.5 mm (0.100 in) Rotational travel ±17 mrad (1.0 deg) Self-centering repeatability ±0.05 (0.002) Structure material is anodized aluminum					

MODEL ASP-85



NOTE: DIMENSIONS ARE IN INCHES EXCEPT WHERE NOTED.

MODEL AST-100



MODEL AST-100	Center-of-Compliance Projection mm (in)	SHEAR PAD TYPE			
		MO-30	CR-35	CR-45	CR-55
Lateral stiffness N/mm (lb/in)	75 (3.0)	14.9 (85)	25.6 (147)	42.0 (241)	59.6 (341)
	100 (3.9)	14.9 (85)	25.6 (147)	42.0 (241)	59.6 (341)
	125 (4.9)	16.9 (97)	29.0 (166)	47.7 (272)	67.6 (386)
	150 (5.9)	10.5 (60)	18.0 (103)	29.6 (169)	42.0 (240)
Rotational stiffness N-mm/mrad	75 (3.0)	81 (720)	140 (1240)	230 (2030)	326 (2880)
	100 (3.9)	128 (1130)	220 (1940)	361 (3190)	512 (4220)
	125 (4.9)	175 (1550)	301 (2660)	494 (4370)	700 (6200)
	150 (5.9)	338 (2990)	581 (5140)	953 (8430)	1350 (11960)
Axial stiffness N/mm (lb/in)		670 (3800)	1140 (6530)	1800 (10720)	2660 (15200)
Torsional stiffness N-mm/mrac in-lb/rad)		8.8 (78)	15.2 (135)	25.0 (221)	35.4 (313)
Axial load (max usable) N (lb)		2200 (500)	3700 (850)	6200 (1400)	8800 (2000)
Weight 0.60 kg (1.30 lb) Lateral travel ± 2.5 mm (0.100 in) Rotational travel ± 17 mrad (1.0 deg) Self-centering repeatability ± 0.05 (0.002) Structure material is anodized aluminum					

NOTE: DIMENSIONS ARE IN INCHES EXCEPT WHERE NOTED.

IDENTIFY YOUR PART NUMBER

Model Identification	Unit Diameter (mm)	Center-of-Compliance Projection (mm)	Shear Pad Selection	Anti-Rotation Feature (optional)
		50, 75, 100, 125, 150	MO30, CR35, CR45, CR55	Model AST-100 & ASP-85 Only
AST	- 100	- 75	- CR35	- AR

Example Part No: **AST-75-75-CR35**

Model Identification (optional)	Unit Diameter (mm)	
		MB = Machine Blank TB = Tooling Blank
AST	- 100	- 75

Example Part No: **AST-100-75**

For elimination of “setting time” in high speed applications, see PFA’s Lock-Out System on page 16.