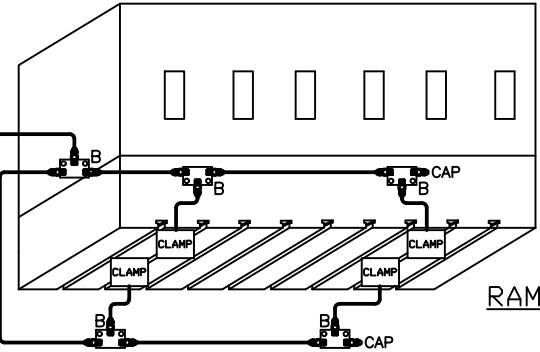
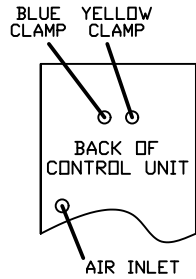
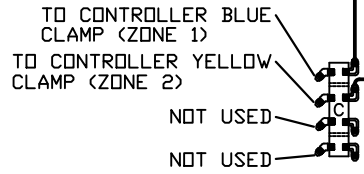
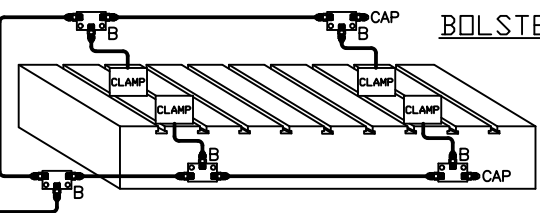


MOUNTING EXAMPLE

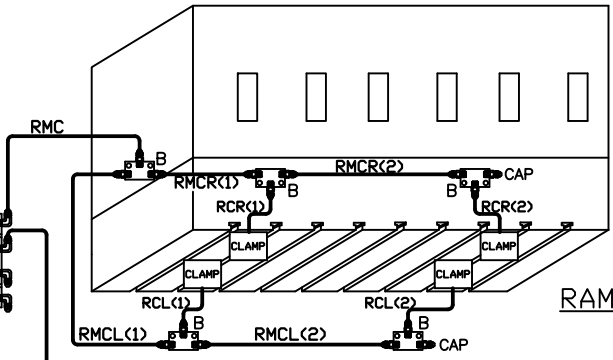
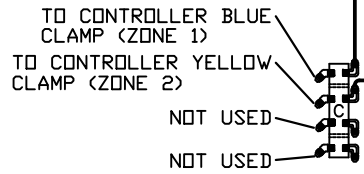


RAM



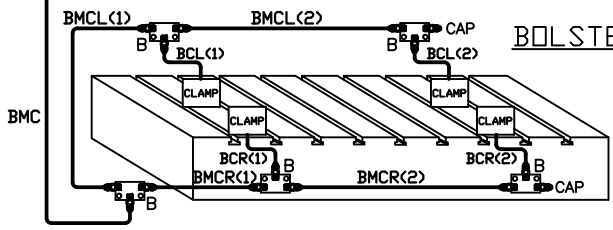
BOLSTER

RAM MAIN CLAMP (RMC)



RAM

BOLSTER MAIN CLAMP (BMC)



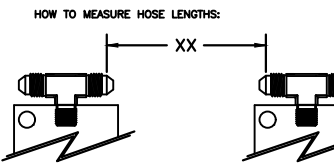
BOLSTER

## DI-4L4L INSTALLATION KIT

ILLUSTRATION	QTY	PFA-ACC P/N	DESCRIPTION	ILLUSTRATION	QTY	PFA-ACC P/N	DESCRIPTION
B	10	HC14649	MANIFOLD, FULL ASS'Y		1	14499-XX	XX = LENGTH IN INCHES
	BOM (EACH)						
	1	HB10680	MANIFOLD CONNECTOR, STRAIGHT				
	3	FF00119	CAP, 3/8" FLARE				
	2	FAB0200	1/4-20 HEX SCREW x 1 1/4" LONG				
C	1	HC10050	MANIFOLD, FULL ASS'Y		1	14499-XX	XX =
	BOM (EACH)						
	1	HB10050	MANIFOLD CONNECTOR, ELBOW 90°				
	4	FF00170	CONNECTOR, ELBOW, 45°				
	4	FF01835	CAP, 3/8" FLARE				
	2	2214793	STICKER, BLUE				
	2	2214792	STICKER, YELLOW				
	2	2214794	STICKER, WHITE				
	2	2214791	STICKER, BLACK				
		2	FAB0224				
D	8	FA06237	DOUBLE JIFFY CLIP (NOT SHOWN)				
E	10	FA05768	JIFFY CLIP (NOT SHOWN)				
F	18	FA30406	1/4-20 BTHD SCREW x 3/8" LONG (NOT SHOWN)				

NOTE: HOSE AND LOOSE FITTINGS SHIPPED IN BULK, HOSE ASSEMBLY/FABRICATION BY CUSTOMER AT THEIR FACILITY  
XX = LENGTH IN INCHES

NOTE: WHEN SHIPPING BULK HOSE AND FITTINGS, SEND THE FOLLOWING QUANTITY OF ITEMS:  
HOSE, PART #HO14500, 100 FEET  
FITTINGS, PART #FF14502, 40 PIECES



IMPORTANT! LEAVE ROOM FOR PRESS AND CLAMP MOVEMENT!

# DI-4L4L

MEN: 9-2-94, REV. A BULK: RESC. ECH 8/1-98 PER: 8-23-11, REV. A ECH: 8/1-98	SCALE N.T.S.	PFA, INC. 1118 VIBERTS BUNSEN DRIVE, GERMANTOWN, VI. 23022 262-230-4410, 262-230-4409 (fax), pfa-inc.com
	SHEET 1 of 1	DRAWING NUMBER DI-4L4L