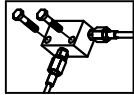
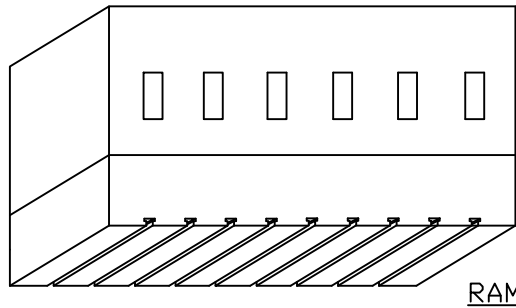
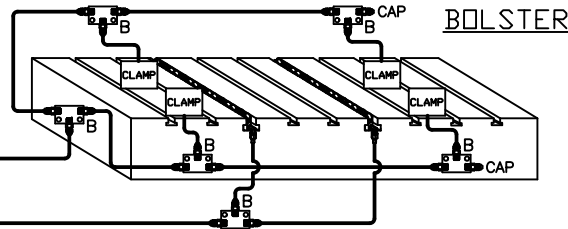
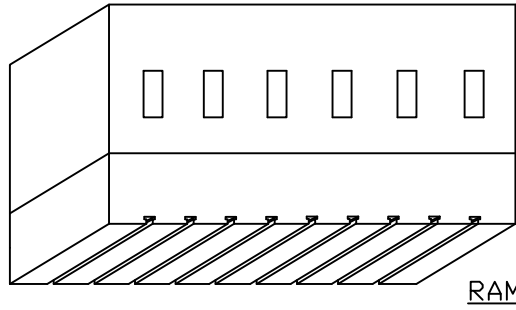
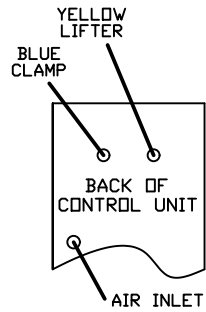


MOUNTING EXAMPLE

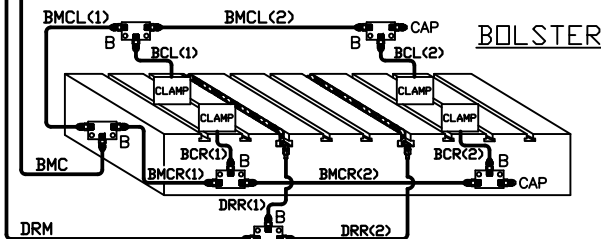


TO CONTROLLER BLUE CLAMP (ZONE 1)  
TO CONTROLLER YELLOW LIFTER (ZONE 2)



TO CONTROLLER BLUE CLAMP (ZONE 1)  
TO CONTROLLER YELLOW LIFTER (ZONE 2)

BOLSTER MAIN CLAMP (BMC)



DI-004S-2DL INSTALLATION KIT

ILLUSTRATION	QTY	PFA-ACC P/N	DESCRIPTION	ILLUSTRATION	QTY	PFA-ACC P/N	DESCRIPTION
B	6	HC14649	MANIFOLD, FULL ASSY		1	14499-XX	NOTE: HOSE AND LOOSE FITTINGS SHIPPED IN BULK. HOSE ASSEMBLY/ FABRICATION BY CUSTOMER AT THEIR FACILITY. XX = LENGTH IN INCHES.
	BOM (EACH)						
	1	HB10680	MANIFOLD CONNECTOR, STRAIGHT CAP, 37° FLARE				
	2	FAB0200	1/4-20 HEX SCREW x 1 1/4" LONG				
C	1	HC10050	MANIFOLD, FULL ASSY	BMC-XX	1	14499-XX	XX =
	BOM (EACH)			BMCR(1)-XX	1	14499-XX	XX =
	1	HB10020	MANIFOLD CONNECTOR, ELBOW 90°	BMCR(2)-XX	1	14499-XX	XX =
	4	FF00053	CONNECTOR, ELBOW, 45° CAP, 37° FLARE	BMCL(1)-XX	1	14499-XX	XX =
	2	2214783	STICKER, BLUE	BMCL(2)-XX	1	14499-XX	XX =
	2	2214782	STICKER, YELLOW	BCR(1)-XX	1	14499-XX	XX =
	2	2214784	STICKER, WHITE	BCR(2)-XX	1	14499-XX	XX =
2	2214781	STICKER, BLACK	BCL(1)-XX	1	14499-XX	XX =	
2	FAB0224	1/4-20 HEX SCREW x 1 1/2" LONG	BCL(2)-XX	1	14499-XX	XX =	
D	8	FA06237	DOUBLE JIFFY CLIP (NOT SHOWN)	DRM-XX	1	14499-XX	XX =
	12	FA05788	JIFFY CLIP (NOT SHOWN)	DRR(1)-XX	1	14499-XX	XX =
E	20	FA30406	1/4-20 BTHD SCREW x 3/8" LONG (NOT SHOWN)	DRR(2)-XX	1	14499-XX	XX =
	NOTE: WHEN SHIPPING BULK HOSE AND FITTINGS, SEND THE FOLLOWING QUANTITY OF ITEMS: HOSE, PART #HO14500, 50' FITTINGS, PART #FF14502, 26 PIECES						
HOW TO MEASURE HOSE LENGTHS:							
<b>IMPORTANT!</b> LEAVE ROOM FOR PRESS AND CLAMP MOVEMENT!							

DI-004S-2DL

		PFA, INC. N18 V18251 BUNSEN DRIVE, GERHARTDVA, VI. 53022 252-250-4410, 252-250-4409 (fax), pfa-inc.com	
HDN 7-23-12		INSTALLATION KIT	
SCALE	N.T.S.	DRAWING NUMBER	
SHEET	1 of 1	DI-004S-2DL	